



BUILT TOUGH IN AMERICA

There are a multitude of mixing impeller designs available for industrial mixing. Each impeller has unique characteristics so, when trying to decide which impeller design is best for your specific process, you can depend on BRAWN.

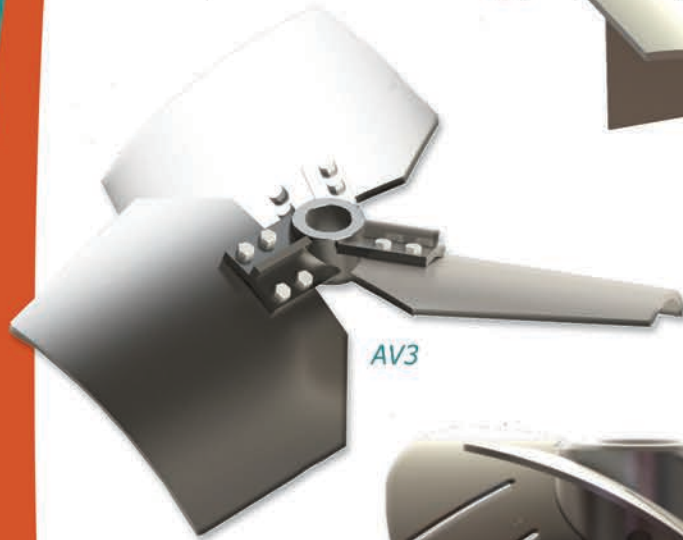
In addition to having many available impeller design options, BRAWN can provide a wide selection of metal alloys and corrosion / abrasion resistant coatings to withstand a broad spectrum of chemicals.



Refined Impeller Performance



AF3



AV3



AHS4 LC



RHP6



Double Helix

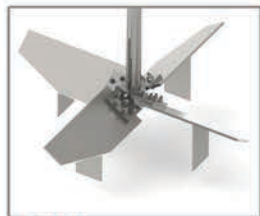
WE HAVE TEN'S OF THOUSANDS OF MIXERS IN THE FIELD AND WILL ASSIST YOU IN CHOOSING THE BEST IMPELLER FOR YOUR MIXING SOLUTION

High Flow Impellers for Blending & Solids Suspension

Ideal for blending, solids suspension and dissolution applications. Designed to maximize strength at lower weights compared to other axial flow impellers allowing for long shafts and smaller shaft dimensions



AF3



A35M



AV3



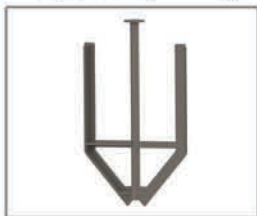
A35



Propeller

High Viscosity Blending

Accurately and intensely move the product while running at the lower speeds required for high viscosity blending. Designed for the lower power required for bulk motion, blending and heat transfer applications especially in high viscosity and/or non-Newtonian fluids



Anchor



Double Helix



A35



AV3



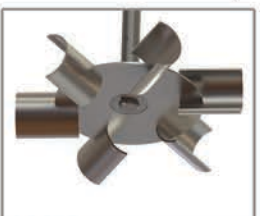
A45

High Shear Solids Dispersion, Dissolution, Multi-Phase Dispersions and Emulsion

Convert the majority of the energy of the motor to shear force. Designed to excel at quickly breaking down solids and producing a fine uniform dispersion



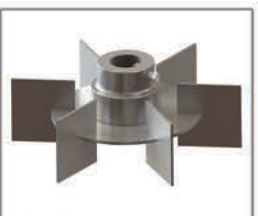
AHS4



RHP6



AV3LC



R906



RBT

Cleanable & Sanitary

Provide excellent resistance to corrosion and therefore minimizing contamination of the material being processed. Smooth surfaces significantly reduce localized corrosion processes.

Close Bottom Clearance

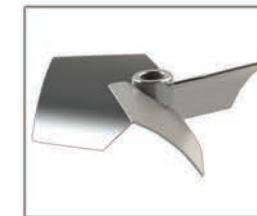
Provide the down-pumping axial flow required for flow patterns similar to radial flow impellers. This results in reduced pumping and higher shear assisting with clearing the bottom of the tank of solids.



AHS435



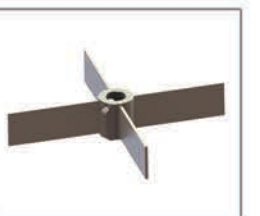
Propeller



AV3



SP4



FP4



A35UP



MIXING SOLUTIONS™

3389 128th Avenue
Holland, MI 49424
P: 616.399.5600
F: 616.399.3084
www.brawnmixer.com